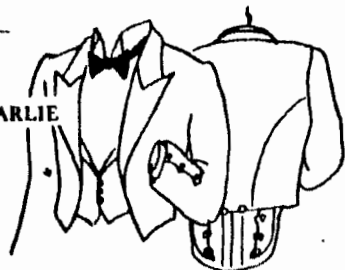


WEAR IT WITH PRIDE!

Highland garb, the kilt, the plaid (say played) and accoutrements are a controversial subject, even among Highlanders! The do's and don'ts have changed and continue to change since the first weavers loomed these

colorful fabrics. Here then are some basic guide lines, gleaned from many sources, that may be helpful in deciding what to wear and when and how.

PRINCE CHARLIE
with black tie



EVENING WEAR
with lace jabot



KENMORE

MONTROSE

CROMAG

Only carried outdoors.
Length should be equal to distance from ground to arm pit.

KILT PIN
Day—plain
Evening, ornate with jewel

SKEAN DHU

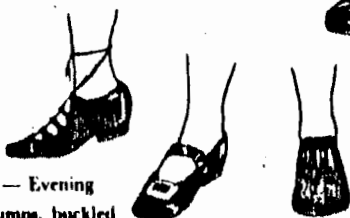
Day—plain, evening ornate, with sheath worn in right stocking (if you are right handed)



SHOES

Day—sturdy laced or buckled brogue.

SHOES — Evening
Light pumps, buckled or laced



BALMORAL

Plain wool, never tartan or Tam O' Shanter. May have diced band. Cap badge on left side.



JACKET

Day—plain tweed, never reaches below the seams of kilt.

SHIRT

Plain contrasting color or white.

TIE

Plain, contrasting color, regimental or tartan.

BUTTONS

Day—bone or horn, evening—silver.

WAISTCOAT

Day—matching tweed, evening—tartan, scarlet or white.

KILT

Reaches to center of knee or touches floor when kneeling.

GARTER FLASHES

Usually red or green, but any color matching kilt is satisfactory.

HOSE

Day—plain colors, evening—tartan, diced, white or fawn.



THE PLAID FOR THE LADIES

As worn when it is of her clan.



As worn by wives of chiefs, or Colonels of Scottish Regiments



When a lady marries out of her clan, but wishes to wear her own tartan.



For dancing, to keep the front of the dress clear of ash.



PLAID

Over left shoulder, day wear for pipers, evening for others.



BELT

Day—brass buckle evening—silver, with crest or insignia.



SPORRAN

Day—Leather or fur, evening—horse hair, or fur, trimmed with silver.

